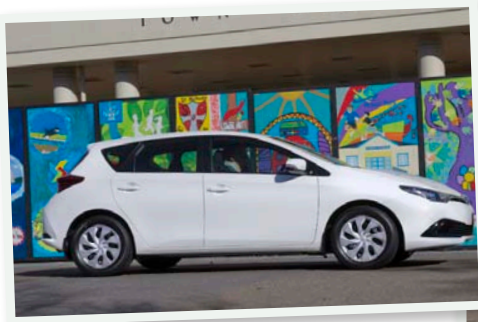




**TOYOTA**  
*Believe*

# ***COROLLA*** HATCH

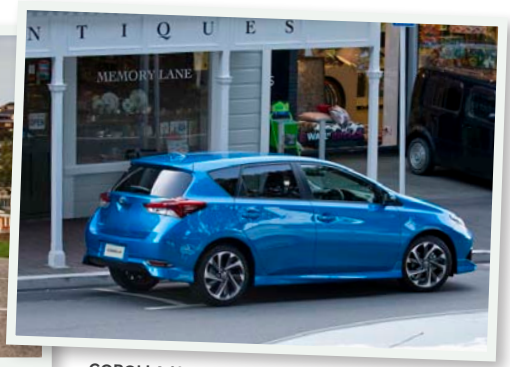




COROLLA HATCH GX IN GLACIER WHITE



COROLLA HATCH GLX IN WILDFIRE



COROLLA HATCH LEVIN SX IN BLUE GEM

# **COROLLA** *Feels good inside*

**World known.** In 1966 Toyota introduced what has become the world's most successful car ever - the Corolla.

With over 40 million sold worldwide, the iconic Corolla continues to deliver what everyone wants in a car - durability, safety, reliability, great fuel economy and value for money.

With each successive generation of the Corolla, Toyota has worked hard to ensure those qualities are central to the mighty car's reputation. Corolla gets the important things right.

**The car we call our own.** Corolla is a hugely successful car in New Zealand. In fact, we've bought over 250,000\* here, so we Kiwis can rightly claim Corolla as our own.

Since 1969, eleven generations of New Zealand's favourite car have featured in our lives and our memories. We've chosen them to learn how to drive. We've relied on them to take us away on holiday. We've trusted them to keep the kids in the back safe.

We've depended on them to minimise repair bills and maintain their resale value.

For so many good reasons, Corolla has long been a special member of the Kiwi family.



Petrol 1.8 Litre  
4 cylinder DOHC with  
Dual Variable Valve Timing-intelligent  
(VVT-i) and Electronic Fuel Injection (EFI).  
GX 5-speed manual transmission  
GX, GLX, Levin SX & ZR Continuously  
Controlled Transmission (CVT) with  
7-speed sequential manual mode.



COROLLA HATCH LEVIN ZR IN CITRUS

\* as at July 2015.

# Features that make a difference

## Exterior - smart from the very start

Corolla Hatch features a stylish grille design with chrome-plated or piano black horizontal accents across the width of its bonnet. A performance themed honey comb lower grille rounds off the sporty Levin SX and ZR models, as does their uniquely patterned 17" shadow chrome alloy wheels.

However, the excellent aerodynamic performance of the Corolla Hatch is no accident. It's helped by a series of clever features perfected by Toyota's design and engineering teams.

From the top down, aspects like the hatchback's Pagoda roof design, the underfloor streamlining and the integrated rear spoiler all work to make the car more aerodynamic.



COROLLA HATCH LEVIN SX IN BLUE GEM

## Interior - high tech, high quality

The good looks of the Corolla Hatch are matched on the inside through the use of quality fabrics, coloured stitching and perforated genuine leather (Levin ZR model). The Corolla Hatch provides a quieter environment on the move too, thanks to improved noise insulation and the increased use of sound-absorbing materials.

Before you even get into the Corolla Hatch you'll note the intuitive Smart Entry and Start System on Levin SX and ZR models, which allow the driver to unlock or lock the doors and start the engine, all while the key remains in their pocket or handbag.

The driving position has been engineered to provide great comfort and variation allowing you to find the most suitable seating position in an instant.

Tilt and telescopic steering, air conditioning (with climate control for Levin SX and ZR), bright high grade meters and Multi-Information Display (MID) display (Levin SX and ZR) which allows you to see vital trip information at a glance all add to the clever and quality feel of the Corolla Hatch.

All Corolla Hatch models feature a comprehensive audio system boasting a large display audio touchscreen which enable Bluetooth hands-free phone and audio capabilities, iPod input and auxiliary control.

The display also acts as the monitor for the standard reversing camera and for the Levin ZR model, is the driver's access point to an intuitive Satellite Navigation system featuring a SUNA Traffic Avoidance System that can provide alternative route information to keep you moving during peak commuting times (traffic information not available for all regions).

Meanwhile, even with a full complement of passengers on-board, there remains plenty of head, shoulder and knee room for all, with the 60:40 split folding rear seat and spacious 360-litre luggage area (rear seat up, without tonneau cover), underlining the unparalleled reputation for absolute practicality.



Soft-touch materials combined with contemporary leather and fabric designs take standards in the Corolla Hatch to new levels, inviting a driving experience that is a real pleasure (leather Levin ZR only).



All Corolla hatch models are also equipped with Bluetooth hands-free phone capability and audio streaming, auxiliary jack, USB and 6 speakers. Voice recognition function is available in GLX, Levin SX, and Levin ZR only.



The Corolla Hatch is all about practicality, so it's no surprise cabin space and luggage capacity are exemplary. The boot features wide rear access and when not required, the parcel tray can slide behind the rear seats. Extra capacity can even be found in storage wells beneath the rear floor.

# GX

FRONT WHEEL  
DRIVE  
**1.8L PETROL**  
6-SPEED  
MANUAL  
TRANSMISSION

FRONT WHEEL  
DRIVE  
**1.8L PETROL**  
CONTINUOUSLY  
VARIABLE  
TRANSMISSION

The selection of soft touch finishes and fabrics are impressively inviting in the GX Hatch. GX drivers have a choice of transmission. The Continuously Variable Transmission (CVT) with seven-speed sport sequential manual mode helps deliver improved combined fuel economy of 6.1-litres/100km\*, while the six-speed manual transmission also features improved combined fuel economy of 6.7-litres/100km\*.



Corolla GX Hatch is available with a choice of a 6-speed manual or Continuously Variable Transmission.



COROLLA HATCH GX IN GLACIER WHITE



The GX steering wheel features numerous convenient controls for the audio and Bluetooth phone system, as well as display settings, and cruise control.



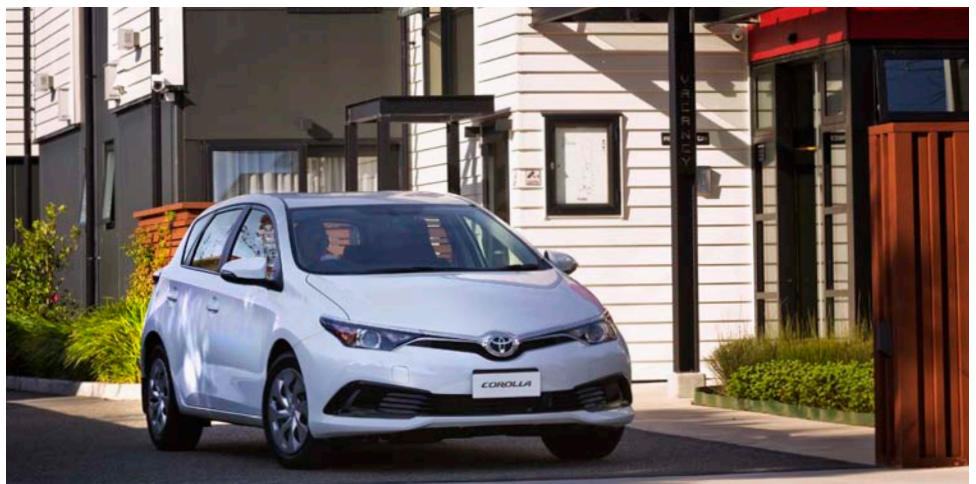
Every Corolla Hatch has a Display Audio touchscreen. The GX has a 6.1" touchscreen providing access to all your audio, including Bluetooth streamed files from your smartphone or device. The screen is also your reversing camera monitor, helping you to manoeuvre with greater assurance.



The rear seats offer the added flexibility of 60:40 split folding, allowing better utilisation of boot space when carrying longer items. The front seats feature premium-look black and white stitched fabric side bolsters.



The exterior design of the Corolla Hatch features body-coloured bumpers, piano black accents and a low profile 'shark fin' radio antenna that all serve to accentuate the car's stylish, modern lines.



\*Fuel consumption and CO<sub>2</sub> emissions will vary depending on driving conditions/style, vehicle condition and options/accessories fitted. Fuel consumption (combined ADR 81/02), CO<sub>2</sub> emissions (combined ADR 79/04).

# GLX

FRONT WHEEL  
DRIVE  
1.8L PETROL  
CONTINUOUSLY  
VARIABLE  
TRANSMISSION

Added touches of flair, a higher specification level, more technology and distinctive finishes make the Corolla Hatch GLX an attractive option for drivers seeking more.



COROLLA HATCH GLX IN WILDFIRE



Parking and reversing is easy (and safer) thanks to the Corolla Hatch GLX's reversing camera technology, which gives you a bright, crisp view of the world behind.



The GLX features a smooth, seamless seven-step Continuously Variable Transmission (CVT) with Sport mode.



There is generous space inside the Corolla Hatch GLX, with plenty of head and shoulder room for all occupants. The blend of premium fabric and subtle surface textures creates a dynamic, modern-looking interior.



The GLX adds more spirit to proceedings, with fog lights, 16" silver alloy wheels, with chrome plated horizontal accents framing the black lower grille.



Rear privacy glass adds to the sleek look of the GLX while providing protection from the heat of direct sunlight.

# LEVIN SX

FRONT WHEEL  
DRIVE  
**1.8L PETROL**  
CONTINUOUSLY  
VARIABLE  
TRANSMISSION

The Levin badge has a unique history within Toyota as something special. The Corolla Hatch Levin SX brings with it a sportier look both inside and out and higher specification levels. Levin is an old English term meaning 'lightning' and one drive of the SX and its ZR sibling will remind you why.



COROLLA HATCH LEVIN SX IN BLUE GEM



Corolla Hatch Levin models underline the fun factor with responsive paddle shift technology that allows you to shift sequentially through the gears, creating an involving and exciting drive.



The contemporary instrument panel welcomes you on entry with new technology, silver painted accents and soft touch leather look materials.



Performance is measured on high grade two-ring gauges grouped with a 4.2" colour Multi-Information Display (MID).



All models have 60:40 split folding rear seats that allow optimisation of space for passengers and luggage. Levin SX seats are wrapped in sports-themed black fabric with orange stitching.



The Levin SX, like all Corolla hatch models has a lively 1.8-litre petrol engine that features a Formula-1 inspired Acoustic Control Induction System (ACIS) to optimise power and torque while helping to improve fuel efficiency.



# LEVIN ZR

FRONT WHEEL  
DRIVE  
**1.8L PETROL**  
CONTINUOUSLY  
VARIABLE  
TRANSMISSION

The Corolla benchmark for luxury is the Levin ZR. From leather to lights, never before has a Corolla Hatch had such impressive specifications. For anyone familiar with Corolla, the Levin ZR is a revelation.



**Panorama roof option:**

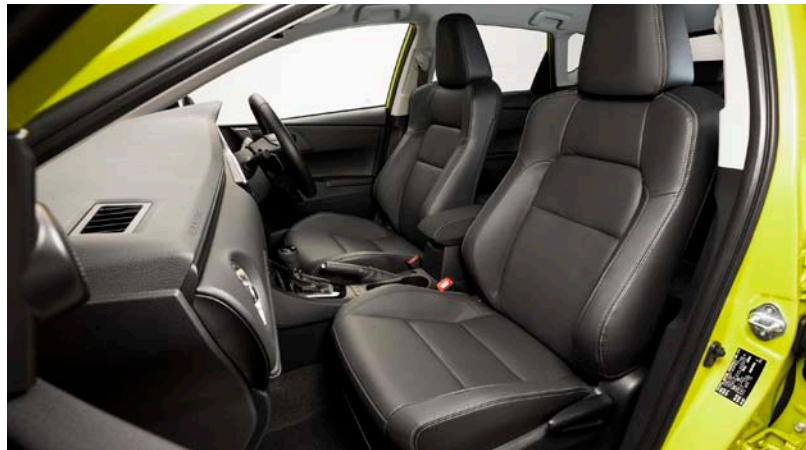
Made from special dark grey laminated glass to reduce glare and heat, the optional Panorama roof on the Levin ZR increases light and opens up the view for both front and rear occupants to enjoy. A rolling sunshade with anti-jam protection can be fully, or partially closed.



COROLLA HATCH LEVIN ZR IN CITRUS



The Levin ZR 7" touchscreen also features Satellite Navigation with SUNA Traffic Avoidance System. This leading technology gives the Levin ZR driver real-time information that can provide alternative routes to keep you moving during peak commuting times (traffic information not available for all regions).



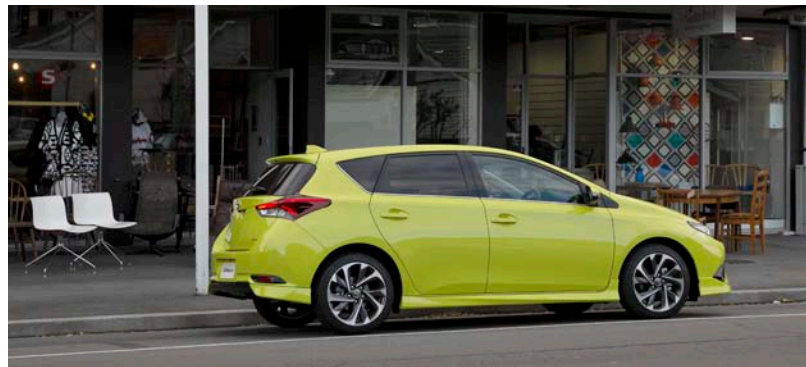
Everywhere you look in the Corolla Hatch you will find a compelling blend of materials that score highly on aesthetic value and will withstand the rigours of daily use. The sport style seating in the Levin ZR supports you in your ideal driving position and surrounds you in the luxury of perforated leather finished with white accent stitching.



Heated front seats for Corolla Hatch Levin ZR make a compelling choice for winter driving.



Connecting your mobile device to the audio system is a simple process that brings day-long comfort to your driving.



Range-topping Levin SX and ZR feature 17" shadow chrome alloy wheels to really set them apart from the crowd. There are eight exterior colours available across the range with two exclusive to the Levin range - Inferno and Citrus.



COROLLA HATCH LEVIN SX IN BLUE GEM

## Superior safety

The 5-star ANCAP rated Corolla Hatch range gives you peace of mind wherever your travels take you.

Corolla Hatch features standard safety features such as Vehicle Stability Control (VSC) and Traction Control (TRC). Added protection also includes a full airbag package with driver's knee airbag, as well as an emergency brake signal that blinks the hazard lights to alert following drivers in certain braking situations.

Every Corolla Hatch also features other safety technology including Anti-lock Brakes (ABS), Brake Assist (BA), Electronic Brake-force Distribution (EBD) and Hill-Start Assist Control (HAC).

With families in mind, a rear seatbelt warning light on the dash alerts the driver when rear passengers are not properly secured.

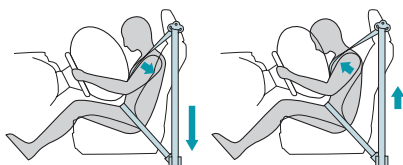
Pedestrian safety collision measures have also been considered with special impact materials designed into the vehicle. Even the windscreen washers are recessed under the specially engineered bonnet.



Electric Power Steering (EPS) is vehicle speed sensitive so low speed manoeuvres require minimal effort while at highway speeds less assistance is provided. The turning circle is a city friendly 10.4m for GX and GLX models and 10.8m for Levin SX and ZR models.



Safety isn't just a priority for the Corolla Hatch. The 5-Star ANCAP safety rating is testament to its renowned Toyota build quality.



Front seat pretensioners instantly tighten the seat belts at the time of a collision to help enhance occupant restraint performance. The force limiter function loosens the seat belts while maintaining the load to help mitigate the impact to the chest regions of the front seat occupants.



Vehicle Stability Control (VSC) and Traction Control (TRC) work in the background to add an extra margin of safety.



Well-located ISOFIX rear seating fixing points enable child seating to be more easily attached.



Standard across all models, a reversing camera with guidelines greatly enhances your safety by helping you avoid pedestrians and obstacles when backing out of a tight spot. It's also great to feel that extra confidence if you find yourself nervous in car parks.



Corolla Hatch occupants are well protected with driver and passenger front, front side, front/rear curtain shield and driver's knee airbags.





Corolla Hatch GX shown fitted with; headlight protectors; bonnet protector - acrylic; weathershields - acrylic; towbar and wiring harness; 16" Podium alloy wheels.

**Corolla Hatch exterior colours**



**Glacier White**  
040



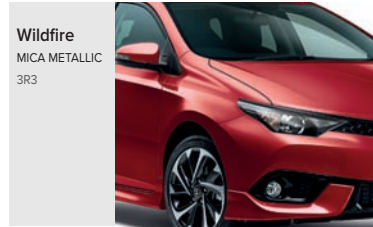
**Crystal Pearl**  
CRYSTAL SHINE  
070  
N/A GX



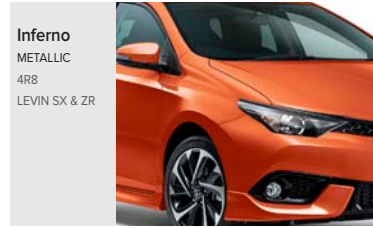
**Silver Pearl**  
METALLIC  
1F7



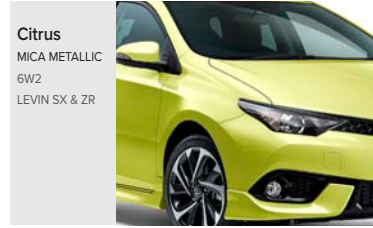
**Ink**  
MICA  
209



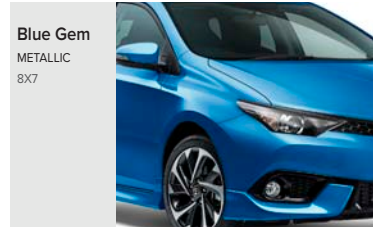
**Wildfire**  
MICA METALLIC  
3R3



**Inferno**  
METALLIC  
4R8  
LEVIN SX & ZR



**Citrus**  
MICA METALLIC  
6W2  
LEVIN SX & ZR



**Blue Gem**  
METALLIC  
8X7

## Make Corolla Hatch your own

Only Toyota Genuine Accessories are designed and manufactured to the same high standard as original parts. They are engineered using manufacturer data to ensure that vehicle integrity is not compromised. This means the functionality of important precision systems such as airbags will not be impaired by their installation.



**Alloy wheels.** Add a sporty flavour to your GL or GLX with European designed 16" Podium alloy wheels in dark metallic anthracite finish.



**Acrylic slim-line weathershields.** These weathershields allow fresh air into the cabin while protecting you from the elements. They are lightly tinted to reduce glare and resistant to UV discolouration.



**Cargo liner.** Protect the luggage area with this all-weather cargo liner. Custom moulded to ensure a secure fit and made from a highly durable and flexible material. Remove and hose off for easy cleaning.



**Towbar and Wiring Harness.** The fixed tongue towbar and accessories allow you to tow a maximum braked load of 1300kg and unbraked load of 450kg with your handy, versatile Corolla Hatch.

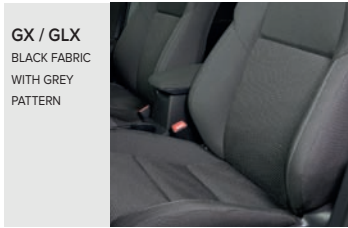


**Carpet Floor Mats.** Protect the floor area of your Corolla Hatch from daily wear and tear with tailored carpet floor mats, woven from premium quality materials. Featuring distinctive Corolla branding, the driver's side floor mat features two retaining clips to ensure it stays securely in place.

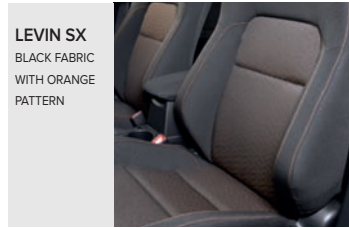


**Seat covers.** Protect your seats from daily wear and tear with high quality fabric seat covers. Boasting excellent wear resistance, they are easy to clean for lasting good looks. Finely tailored to fit snugly, the covers allow easy access to front seat map pockets and are side airbag compatible.

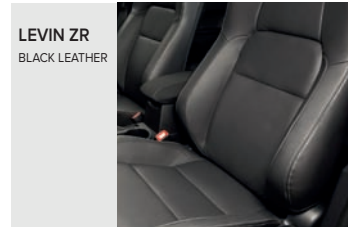
**Corolla Hatch interior trim**



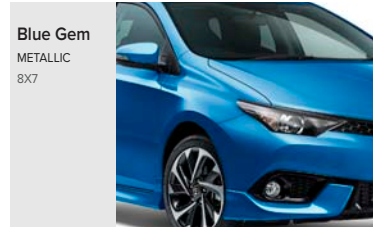
**GX / GLX**  
BLACK FABRIC  
WITH GREY  
PATTERN



**LEVIN SX**  
BLACK FABRIC  
WITH ORANGE  
PATTERN



**LEVIN ZR**  
BLACK LEATHER



**Blue Gem**  
METALLIC  
8X7

# COROLLA HATCH SPECIFICATIONS

	GX		GLX	LEVIN SX	LEVIN ZR
	MANUAL	CVT	CVT	CVT	CVT
MECHANICAL SPECS	Engine description 1.8 Litre, 4 cylinder, in-line, 16 valve Double Over Head Cam (DOHC) with Dual Variable Valve Timing-intelligent (VVT-i), Electronic Fuel Injection (EFI)				
	Maximum power; maximum torque 103kW at 6400rpm / 173Nm at 4000rpm				
	Fuel tank capacity 50 litres; Fuel type: 91 octane or higher is recommended				
	Fuel consumption (combined (ADR 81/02), CO <sub>2</sub> emissions (combined 79/04)*, EURO 5 rating 6.7 L/100km / 156g/km 6.1 L/100km / 143g/km 6.1 L/100km / 143g/km 6.1 L/100km / 143g/km 6.1 L/100km / 143g/km				
	Transmission - 6-speed manual Transmission - Continuously Variable Transmission (CVT) with 7-speed sport sequential manual mode, sport mode, uphill and downhill shift control and lock-up control Paddle shifters Paddle shifters				
STEERING, BRAKES & SUSPENSION	Brakes - Front - Power-assisted ventilated disc; Rear - power-assisted solid disc; lever handbrake Anti-lock Braking System (ABS), Brake Assist (BA), Electronic Brake-force Distribution (EBD) Steering - Electronic Power Steering (EPS), Min turning circle 10.4m (GX, GLX); min turning circle 10.8m (Levin SX and ZR) Suspension - Front - MacPherson strut and stabiliser bar; Rear - Torsion Beam				
	Wheels design and size (temporary spare wheel) 16" steel & silver cap 16" steel & silver cap 16" silver alloy 17" shadow chrome alloy 17" shadow chrome alloy				
	Tyre size 205/55 R16 205/55 R16 205/55 R16 215/45 R17 215/45 R17				
	Headlights - Halogen with manual levelling, light control system (auto on/off) on Levin SX Headlights - LED headlights lights, automatic levelling and cleaners, LED clearance lights, light control system (auto on/off), LED Daytime Running Lights (DRL) Fog lights - Front, chrome surround on GLX, Piano black surround on Levin SX and ZR Smart key system with front door and luggage door touch sensors Body coloured front bumper, outside door handles and rear bumper (with black lower bumper), black front and rear mud guards (GX, GLX), Outside mirrors (with black lower section) with side indicator lights and electric adjustment Front design - Chrome horizontal upper grille, piano black horizontal lower grille with piano black accent (GX), chrome accent on (GLX) Front design - Piano black honeycomb upper grille and lower grille with piano black accent (Levin SX and ZR) Rear privacy glass Front and rear air spats and integrated rear spoiler; rear under spoiler (Levin SX and ZR) Windscreen wipers - Front variable and rear intermittent with washer function				
INTERIOR FEATURES & CONVENIENCE	Smart start system Air conditioning - Manual with dial type controls and pollen filter Air conditioning - Automatic dual zone climate control with toggle controls and pollen filter, LCD screen with temperature, mode and fan displays Interior trims - Black seat fabric with grey pattern, black side bolsters with white stitching, piano black door grip and silver door handles Interior trims - Black seat fabric with orange pattern, black side bolsters with orange stitching, piano black door grip and silver door handles Interior trims - Genuine black leather seats with synthetic side bolsters, piano black door grip and silver door handles Instrument panel - Soft padded upper section with leather-like grain texture. Silver metal style accents on audio surrounds, air registers and gear lever Drivers seat - With manual slide, recline and vertical height adjustments. Power lumbar support and seat heaters in Levin ZR Passenger seat - With slide and recline adjustments; seat heaters in Levin ZR Rear seat - 60/40 split folding, left and right release levers and centre armrest with two cup holders Gear lever with synthetic leather shift lever boot Steering wheel - 3-spoke with cruise control, audio, phone and display switches. Tilt and telescopic manual adjustment Cruise control Inside rear view mirror - Day/night anti-glare function Storage - Centre console box, door pockets with bottle holders, glove box with lamp, front storage tray and overhead sunglass holder. Luggage area with removable parcel tray that slots behind rear seats				
	6.1" EGA touchscreen display with capacitive touch controls 7.0" colour TFT touchscreen display with capacitive touch controls, SMS and email capability Audio - Radio with single disc CD player, AUX port, USB connection, Bluetooth handsfree phone capability and audio streaming, voice recognition - n/a GX; roof mounted shark fin aerial. Six speakers Satellite Navigation and SUNA Traffic Avoidance System (traffic information only available in some regions) Meters - Three ring style with speedometer, tachometer, fuel gauge and compact mono LCD Multi-Information Display (MID) Meters - Two ring style with speedometer, tachometer, fuel gauge, 4.2" colour Multi-Information Display (MID) 4.2" colour Multi-Information Display (MID) with current and average fuel consumption, cruising range, average vehicle speed, driving time, Eco driving indicator zone display, outside temperature and messages display, shift position				
	5-Star ANCAP safety rating 7 Airbag system - Driver and passenger front, front side, front/rear curtain shield and driver's knee Wireless central door locking; engine immobiliser Seat belts - Front - 2 x 3-point ELR, pre-tensioners and force limiters, height adjustable seat belt anchors; Rear - 3 x 3-point ELR Child seat fixing points - 2 x ISOFIX, 3 x tether anchor bracket. Child proof rear door locks Vehicle Stability Control (VSC) and Traction Control (TRC) with on/off switch. Hill-start Assist Control (HAC) Reversing camera with static guidance lines (display in audio)				
	PANORAMA ROOF OPTION - Panorama roof with dark grey laminated roof glass. Roof sun shade is electric rolling style, with jam protection functions				
	Overall length / width / height: 4330mm / 1760mm / 1475mm Wheelbase: 2600mm Seating capacity / Luggage capacity: 5 / 360 Litres Kerb weight- minimum / maximum / Gross vehicle weight: 1250-1255kg / 1805kg 1270-1275kg / 1805kg 1275-1310kg / 1805kg 1275-1310kg / 1805kg 1275-1310kg / 1805kg Maximum towing capacity - Braked / unbraked: 1300kg / 450kg				

Because Toyota believes in going the extra mile we offer comprehensive support and a great range of products and services for our valued customers.

For more detail please visit: [toyota.co.nz](http://toyota.co.nz)



\*Fuel consumption and CO<sub>2</sub> emissions will vary depending on driving conditions/style, vehicle condition and options/accessories fitted. Fuel consumption (combined ADR 81/02), CO<sub>2</sub> emissions (combined ADR 79/04). For more information on fuel consumption ratings and factors that affect fuel economy, please visit: [toyota.co.nz/fuel-economy](http://toyota.co.nz/fuel-economy)

Every endeavour has been made to ensure text details and specifications contained in this publication were accurate as at 8 September 2015. Toyota New Zealand Limited reserves the right at any time to introduce any changes deemed necessary to improve the models shown or for any other reason. Paint and upholstery colours shown in this brochure may differ from actual colours due to variations in printing processes. Some models shown in this brochure may have optional accessories fitted. For further information contact your nearest Authorised Toyota Dealer. They will be glad to assist. [Production effective March 2015]

3,000  
September  
2015  
SB348

