



GT86





GT86



GT86

OVERVIEW



A True Enthusiast's Sports Car

The GT86 is a track-bred car fit for any driver looking for the thrill of a perfectly tuned performance car. Doing away with unusable horsepower and needless electronic interfaces, the Toyota GT86 replaces them with a sports car designed to put the driver back in control.

The GT86 gives you the option of choosing a six-speed manual or six-speed automatic transmission. The sublimely crisp six-speed manual gearbox is a joy to use, with a short-shift action that brings back the simplicity of a perfectly balanced, perfectly tuned performance car.

If you are looking for convenience and ease the six-speed automatic transmission offers complete focus on the road ahead. In the GT86 auto, you can over-ride the auto transmission with paddle shifters.



2020 BEST BARS TOYOTA 86
CHAMPIONSHIP TR86

AVAILABLE AS:
2.0L PETROL 6-SPEED MANUAL
2.0L PETROL 6-SPEED AUTO



BREMBO® BRAKES WITH
RED CALIPERS



10-SPOKE GUN METALLIC
17" ALLOY WHEELS



TRACK DRIVE MODE



SACHS®
PERFORMANCE DAMPERS



DUAL EXHAUST PIPES
WITH REAR DIFFUSER



ALCANTARA & LEATHER ACCENTED
SPORTS SEATS WITH
FRONT SEAT HEATERS

GT86

PERFORMANCE & SAFETY



Sports power at its finest

The updated Brembo brakes with red callipers provide greater stopping power. Improved grip, better cornering dynamics and enhanced responsiveness and stability are provided by the Sachs shock absorbers. The GT86 is powered by a two litre 'boxer' engine producing 152 kW and 212 Nm of torque when mated to the 6-speed manual transmission. The flat shape of the 16-valve Double Over-Head Cam (DOHC) 2.0L engine means it sits low and towards the middle of the car and helps with the vehicle's overall weight distribution.

Track mode allows the driver to adjust the level of stability and traction control in the car, including a 'fully off' option. Anyone with a decent amount of experience at the track knows this is a good thing as it increases the driver's range of control, enabling enjoyable sports driving.

The GT86 has a 5 Star (2012 Rated) ANCAP rating and comes with a range of features to encapsulate the driver and passengers, whilst ensuring maximum driver enjoyment. The seven airbags provide a comprehensive curtain of protection, including a driver's knee airbag. The GT86 even includes two ISO-Fix attachments and two tether anchors.



2.0L PETROL MANUAL

MAX POWER / MAX TORQUE
152kW / 212Nm

FUEL CONSUMPTION (COMBINED*)
8.4L/100km

CO₂ EMISSIONS (COMBINED*)
194g/km

BRAKED TOWING CAPACITY
Not rated



2.0L PETROL AUTOMATIC

MAX POWER / MAX TORQUE
147kW / 205Nm

FUEL CONSUMPTION (COMBINED*)
7.1L/100km

CO₂ EMISSIONS (COMBINED*)
164g/km

BRAKED TOWING CAPACITY
Not rated

STANDARD SAFETY FEATURES:

ANCAP 5 STAR RATING

7-AIRBAG SYSTEM

ANTI-LOCK BRAKING SYSTEM

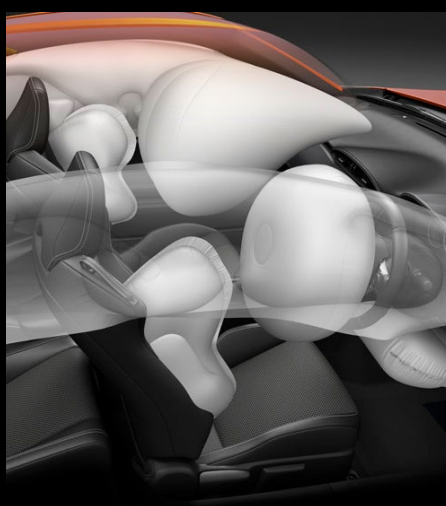
ELECTRONIC BRAKE-FORCE
DISTRIBUTION

BRAKE ASSIST

VEHICLE STABILITY CONTROL
WITH OFF SWITCH

TRACTION CONTROL

HILL START ASSIST





GT86

DESIGN & TECHNOLOGY

Purpose designed with a performance edge.

The GT86 is a true sports coupe that underlines the joy of driving even before you've started the engine.

Ergonomically engineered to give the driver everything required for a thrilling on-road track experience - a perfectly formed gear shift that sits comfortably in hand, a small diameter performance steering wheel and supportive sports seats – the GT86's cockpit has now been redesigned for an even more inspiring driving environment.

The GT86 comes with Alcantara and leather accented sports front seats. Both the driver and front passenger seats are sports styled seats with an inbuilt heating function and large side and shoulder bolsters, keeping you snug round tight bends.

It might wear its sports coupe DNA on its sleeve, but the GT86 still features plenty of convenient technology features designed to add ease to your drive. For instance, there's a smart key system that detects when you are near the car and unlocks it for you the moment you touch the door handle. The GT86 features push button start, dual zone climate control, a frameless inside mirror and an eye-catching centre console with illuminated controls.



GT86

COLOURS & TRIM



Crystal White 040 Pearl



Ignition M7Y



Ice Silver G1U Metallic



Hyper Blue DAR



Magnetite Grey P8Y Metallic



Gravity Blue K3X



Midnight Black D4S



GT86 Black Leather & Alcantara Accented



GT86 Black & Red Leather & Alcantara Accented

GT86





GT86

ACCESSORIES



Only Toyota Genuine Accessories are designed and manufactured to the same high standard as original parts. Fitting Toyota Genuine Accessories also ensures the integrity of your vehicle, with components tested to exacting standards for New Zealand conditions and backed by a 3 year or 100,000 kilometres* warranty. For more information on our Toyota Genuine Accessory range please contact your local Toyota Store or visit our website: www.toyota.co.nz



18" TRD 'SF3' (Forged) aluminium wheel. Forged alloy wheel with a 5 spoke design that offers rigidity and has suitable weight reduction at only 8.2kg per wheel.



TRD Push button start. Awaken your racing spirit every time you push this TRD logo push start switch. Sharp design sense in these small details sets your vehicle apart from the crowd. Provides the same function and quality as the standard part.



TRD Rear Bumper Spoiler. The Rear Bumper spoiler which is best installed with the TRD side skirts and front spoiler helps to extenuate the already aggressively looking 86. Requires TRD High response muffler.



TRD High Response Muffler. The total of four exhausts (two on each side) gives the rear styling a burst of racing passion. Exceedingly good care was taken in tuning for the perfect sound, giving the engine a satisfying noise that you'll feel as much as hear. Requires TRD Rear Bumper Spoiler.



*Whichever comes first. Warranty valid from when accessory fitted, at time of new vehicle purchase at your Toyota Store.



TRD Front Fender Aero Fin (CFRP). During driving the front fender fins improve the ground feeling by generating downforce at the front and give an improved stability feeling while cornering. The carbon fibre gives an increased strength to the fin while giving an attractive aesthetic to the side of the car.



TRD Rear Window Louvre. Produces a powerful rear styling without greatly hindering the field of vision, as well as suppressing the penetration of sunlight into the cabin from above.



TRD Front tower bar. This tower bar features a carbon shaft for simultaneous optimal rigidity and weight reduction. It brings out the suspension's full performance by controlling flex in the upper part of the suspension tower. Even customers who choose not to replace their suspension will feel the boost in body rigidity. Install together with the member brace set and door stabilisers to take that body rigidity even further.



TRD GT Wing. This newly designed GT wing incorporates a swan neck mount allowing for a nice, smooth lower surface of the wing. This gives the driver excellent down force and therefore traction.

GT86 SPECIFICATIONS

	GT86 MANUAL	GT86 AUTOMATIC
MECHANICAL SPECIFICATIONS	Engine description: 2.0 Litre, 16 valve, Boxer 4 cylinder Double Overhead Camshafts (DOHC) with Dual Variable Valve Timing Control - intelligence (VVT-i) and D-4S Direct Injection Technology	
	Maximum power	152kW at 7000rpm
	Maximum torque	212Nm at 6400-6800rpm
	Fuel type	98 recommended. 50L tank capacity
	Drive type	Rear wheel drive
	Acceleration: 0 to 100km/h	7.4 seconds
	Fuel consumption: ADR 81/02 (combined)	8.4 L/100km
	CO ₂ emissions: ADR 79/04 (combined); Exhaust emission standard Euro 5	194 g/km
	Drag Co-efficient	0.27 Cd
	Transmission: 6-speed manual, Track driving mode	•
	Transmission: 6-speed multi-mode automatic with blipping downshift control and flex lock-up control. Sport, Snow and Track driving modes	•
STEERING, BRAKES & SUSPENSION	Torque sensing Limited Slip Differential (LSD)	•
	Steering: Vehicle speed sensitive electronic power assisted rack and pinion	•
	Brakes: Brembo power-assisted disc and red brake callipers	326mm ventilated
	Rear brakes: Brembo power-assisted disc and red brake callipers	316mm ventilated
EXTERIOR FEATURES	Suspension: Front: MacPherson strut and stabiliser bar, Sachs shock absorbers. Rear: Double wishbone with stabiliser bar, Sachs shock absorbers	•
	Wheels: 10 spoke 17" x 7.5" Gun Metal alloy wheels with tyre repair kit	•
	Headlights: Bi-Beam LED with automatic levelling, pop-up type headlight cleaners, LED Daytime Running Lights, LED front fog lights	•
	Lower grille: T-mesh pattern	•
	Windscreen wipers: Variable intermittent and mist functions	•
	Aluminium wing-type raised rear spoiler	•
	LED rear fog light; rear bumper diffuser	•
	Exhaust: Dual exhaust with stainless steel tips	•
	Privacy rear glass	•
INTERIOR FEATURES & CONVENIENCE	Seat material: Black leather and Alcantara accented seat material with contrast stitching	•
	Driver's seat: Slide, recline and vertical height adjustment. Passenger seat: Slide, recline with walk in system	•
	Seat heaters: Driver and front passenger seats	•
	Steering wheel: Sports style 3-spoke, leather with stylised "86" logo, contrast stitching and silver detail; leather gear lever	•
	Steering wheel controls for audio and phone	With paddle shifters
	Sports style pedals: Aluminium with grips	•
	Dual zone climate control air conditioning	•
	Cruise control	•
	Illuminated entry system	•
	Inside frameless rear view mirror with manual day/night function	•
	Storage: Centre console tray, cup holders, door pockets with 500ml bottle holders and glove box	•
AUDIO	Meters: 3-ring meter analogue gauge with digital speedometer; 4.2" colour Multi Information Display (MID) with digital trip meter (odo, trip A, trip B), outside temperature C°, current fuel consumption L/100km, average fuel consumption L/100km, average speed, total driving time, total distance covered; G meter, power and torque curve graph, stopwatch, lap timer including best lap; meter illumination control	•
	6.1" TFT touch screen display, radio with single disc CD player, audio input jack, USB port, Bluetooth handsfree phone capability, audio streaming, voice recognition, 6 speakers; Satellite Navigation with SUNA Traffic Avoidance System (traffic information available only in some regions)	•
SAFETY FEATURES	ANCAP 5 Star safety rating	•
	Airbag system: Driver and front passenger, front seat side, front/rear curtain shield and driver's knee	•
	Anti-lock Braking System (ABS), Brake Assist (BA), Electronic Brake-force Distribution (EBD), Vehicle Stability Control (VSC), Traction Control (TRC), Emergency Stop Signal (ESS), Hill-start Assist Control (HAC)	•
	Seat belts: Front - 2 x 3-point Emergency Locking Retractor (ELR) with pre-tensioners and force limiters; Rear - 2 x 3-point ELR/Automatic Locking Retractor (ALR); Child seat fixing points - 2 x ISOFIX, 2 x tether anchor bracket	•
	Engine immobiliser; smart key entry and push button start	•
	Reversing camera	•
DIMENSIONS	Overall length / width / height (with Antenna)	4240mm / 1775mm / 1285mm (1320mm with antenna)
	Wheelbase:	2570mm
	Minimum ground clearance:	130mm
	Approach Angle: front bumper / rear bumper	13.2° / 18.3°
	Gross vehicle weight:	1670kg
	Kerb weight: (min/max)	1252/1258kg
	Seating capacity:	4
	Luggage capacity:	237L

Because Toyota believes in going the extra mile we offer comprehensive support and a great range of products and services for our valued customers.

VISIT: toyota.co.nz | CALL: 0800 TOYOTA