



TOYOTA
Believe

LAND CRUISER 70



LX DOUBLE CAB CHASSIS IN FRENCH VANILLA

LAND CRUISER 70



Many of the early Land Cruiser models can still be seen on our roads in daily use - testimony to their legendary reliability.

For over 60 years, Toyota Land Cruiser has proven its ability in rugged encounters all over the globe - handling the day in, day out pressures of an on farm, off road, on site vehicle with extraordinary stamina and dependability.

Land Cruiser's enviable reputation continues in New Zealand. From Cape Reinga to Bluff, every day we are pushing Land Cruisers to their limits on the farm and in some of the most severe conditions on the planet. Land Cruiser 70 has a well earned reputation for reliability and durability.

Land Cruiser 70 has rugged good looks and a sturdy feel. Available in four distinct body shapes so there's even more potential for carrying loads and passengers. With the classic Cab Chassis available in Single and Double Cab variants, a troop carrying Hardtop and the five door Wagon, there's a Land Cruiser 70 to suit every heavy duty application.

Land Cruiser 70 is renowned for reliable high performance whatever the job or working conditions. Land Cruiser 70 is powered by a 4.5 litre V8 common rail Turbo Diesel engine. Delivering 151kW at 3400rpm and an impressive 430Nm of torque from only 1200rpm. This engine provides the muscle needed to tackle the best, and worst of, New Zealand's natural terrain.

Thanks to the Common Rail-type Injection System, exhaust gas recirculation cooler and variable nozzle vane type turbo charger, excellent fuel efficiency and lower emissions have been achieved.

Land Cruiser 70 offers a 5-speed manual transmission, part time 4WD with manual front hubs and a Limited Slip rear Differential (LSD). The optional High Country Package offers front and rear differential locks instead of LSD. The low transfer ratio of 2.488 and high torque at idle allows very low speeds for controlled off road manoeuvres and steep descents.

For the times when there is a road to travel on, you'll notice bumps are evened out thanks to the coil spring front suspension and long wheelbase. Then, when the going gets tough these same coils, coupled with a rigid front axle, give great axle articulation for all important traction. Because the primary role of Land Cruiser 70 is tough off road load carrying, there are leaf springs at the rear.

Land Cruiser 70 has a no nonsense approach but is endowed with air conditioning, an audio system that has Bluetooth handsfree phone capability and audio streaming. There are auxiliary and USB connections so your portable music player can help make your back country travels less arduous.

The key safety feature is Anti-lock Brakes (ABS) on all models. ABS operates when the vehicle is in H2 and H4 modes, except when the optionally available differential locks are engaged. Disc brakes front and rear support the ABS operation.



Tilt and telescopic steering means driver's of all sizes will find a comfortable driving position.



Driver and front passenger airbag protection is provided as part of a revised steering wheel and dash layout.



LX DOUBLE CAB CHASSIS IN GRAPHITE

WITH ACCESSORY DECK FITTED



LX DOUBLE CAB CHASSIS IN FRENCH VANILLA
WITH ACCESSORY DECK FITTED

OPTIONS & ACCESSORIES Only Toyota Genuine Accessories are designed and manufactured to the same high standard as original parts. They are engineered using manufacturer data to ensure that vehicle integrity is not compromised. This means the functionality of important precision systems such as airbags will not be impaired by their installation.



HIGH COUNTRY PACKAGE Front and rear differential locks add greater traction when the going gets really tough. As a factory fitment this option needs to be specified at time of order.



ACCESSORY As well as carrying a decent load, Land Cruiser 70 can tow too. To ensure you maximise Land Cruisers ability, get a towbar certified for a 750 - 3500kg load.



ACCESSORY Acrylic bonnet and headlight protection will keep your Land Cruiser 70 looking good, sold separately.



ACCESSORY While your Land Cruiser 70 is managing the mud outside you can keep control of it inside with these accessory rubber floor mats.



ACCESSORY This Tray body assembly is fabricated from heavy duty galvanised steel with an aluminium checkerplate tray deck. Rear Ladder Rack is available as an option, sold separately.



ACCESSORY The fabric trimmed seats are shaped for all day comfort. When you are hard at work or play dirt can find its way into the cab. Forget about it with accessory heavy duty canvas seat covers that are removable and washable. Drivers seat cover shown.

Make Land Cruiser 70 your own. Talk with your dealer about the factory fitted options and dealer fitted accessories that are available.

SINGLE CAB CHASSIS



SINGLE CAB CHASSIS IN SILVER PEARL



LX SINGLE CAB CHASSIS IN MERLOT RED

Cab Chassis	LX	
Overall length	5220mm	5230mm
Overall width	1790mm	1870mm
Overall height	1970mm	1955mm
Wheelbase	3180mm	3180mm
Minimum ground clearance	235mm	235mm
Wading depth	700mm	700mm
Approach/Departure angle	35°/29°	33°/27°
Turning circle (tyre)	14.4m	14.4m
Gross vehicle weight	3300kg	3300kg
Kerb weight (maximum)	2065kg	2075kg
Maximum towing capacity - braked	3500kg	3500kg
Maximum towing capacity - unbraked	750kg	750kg
Seating capacity	2	2

If you are serious about your work you'll be serious about your tools. Best you have a tough tool kit to get you to work and back.

Land Cruiser Single Cab Chassis models form the backbone of Toyota's legendary workhorse trucks. Built on a strong ladder frame chassis these vehicles will take a lot of punishment without complaint.

While Land Cruiser 70 is all go, big powerful ventilated disc brakes all round slow things down in a hurry.



SINGLE CAB CHASSIS IN SILVER PEARL



LX SINGLE CAB CHASSIS IN MERLOT RED



All variants have a front storage compartment and cup holder with 12V accessory power socket.



Tackling difficult terrain can be hot work so air conditioning is provided in all models to keep things cool. The audio system expands its repertoire with Bluetooth phone capability and MP3 player connection. All models have driver and front passenger airbags for added protection.



DOUBLE CAB CHASSIS



DOUBLE CAB CHASSIS IN MERLOT RED



LX DOUBLE CAB CHASSIS IN MIDNIGHT BLUE

Cab Chassis	LX	
Overall length	5220mm	5220mm
Overall width	1790mm	1870mm
Overall height	1960mm	1945mm
Wheelbase	3180mm	3180mm
Minimum ground clearance	235mm	235mm
Wading depth	700mm	700mm
Approach / Departure angle	35°/29°	33°/27°
Turning circle (tyre)	14.4m	14.4m
Gross vehicle weight	3300kg	3300kg
Kerb weight (maximum)	2205kg	2205kg
Maximum towing capacity - braked	3500kg	3500kg
Maximum towing capacity - unbraked	750kg	750kg
Seating capacity	5	5

There are plenty of tough jobs requiring a whole team to be on site. The Double Cab Land Cruiser will carry five people and their gear anywhere.

Needing five people at a remote site or out the back of the farm is no longer an issue with the Double Cab Land Cruiser 70.

If the day will be a long one the Double Cab models have the large 130 litre fuel capacity.



DOUBLE CAB CHASSIS IN MERLOT RED



LX DOUBLE CAB CHASSIS IN FRENCH VANILLA



Remote door locking is standard for all LX models.



The Double Cab three person rear bench seat can be folded forward providing easy access to useful storage for small items when the seats aren't required.



Land Cruiser 70 exterior colours

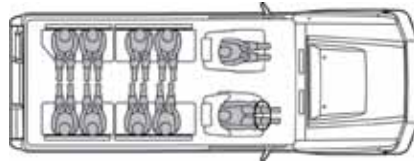
French Vanilla
058



LONG WHEELBASE HARDTOP



HARDTOP IN FRENCH VANILLA



Land Cruiser Hardtop will easily carry eight passengers in the rear. When the parallel seats are folded up the Hardtop becomes a very capable off road van.

Hardtop	
Overall length	5210mm
Overall width	1790mm
Overall height	2115mm
Wheelbase	2980mm
Minimum ground clearance	235mm
Approach/Departure angle	35°/ 25°
Wading depth	700mm
Turning circle	13.6m
Gross vehicle weight	3300kg
Kerb weight (maximum)	2340kg
Maximum towing capacity - braked	3500kg
Maximum towing capacity - unbraked	750kg
Load space floor length	2040mm
Load space width	1510mm
Load space height	1265mm
Seating capacity front/rear	2/8

Moving staff and their gear to distant off-road worksites? Land Cruiser Hardtop will take them there with ease.

With seating for 10, Land Cruiser 70 Hardtop has the space and the grunt to carry the whole crew, and all the gear that travels with them. Transporting staff to off-road work locations is easy thanks to the parallel rear bench seats carrying eight passengers. Covered in hard wearing vinyl, these rear seats can accommodate a small army and then fold away when not in use to reveal a large cargo area.



HARDTOP IN FRENCH VANILLA



HARDTOP IN FRENCH VANILLA



Entry to the rear seats is through wide opening doors.

Silver Pearl
1F7
N/A HARDTOP



Graphite
1G3
N/A HARDTOP



Vintage Gold
MICA METALLIC
4R3
N/A HARDTOP



Merlot Red
MICA
METALLIC
3Q3
N/A HARDTOP



LX WAGON



LX WAGON IN SILVER PEARL



LX Wagon	
Overall length	4910mm
Overall width	1870mm
Overall height	1940mm
Wheelbase	2730mm
Minimum ground clearance	230mm
Approach/Departure angle	33° / 23°
Wading depth	700mm
Turning circle	12.6m
Gross vehicle weight	3060kg
Kerb weight (maximum)	2295kg
Maximum towing capacity - braked	3500kg
Maximum towing capacity - unbraked	750kg
Load space floor length / rear seat folded	940/1400mm
Load space width	1525mm
Load space height	1115mm
Seating capacity	5

...if you work hard you probably play hard too. The LX Wagon could be your perfect companion.

At the head of Land Cruiser 70 series line-up, the LX five door Wagon combines the creature comforts you'd expect from a Toyota with the freedom to hunt out the best leisure spots New Zealand has to offer. Land Cruiser 70 LX Wagon will open your eyes to the pure pleasure of four wheel driving at its best.



LAND CRUISER LX WAGON IN SILVER PEARL



Seating for five and generous interior space makes LX wagon a candidate for off-road adventures.



Manual front hubs are standard across the Land Cruiser 70 range - the preferred choice of many four wheel drive experts.



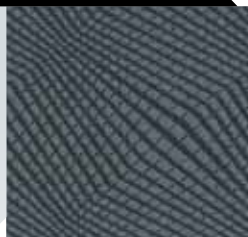
The rear seat folds and tumbles away to increase the already large cargo area.

Midnight Blue
8H6



Land Cruiser 70 interior colours

Grey and blue patterned woven fabric
FRONT SEATS
ALL MODELS



Grey vinyl with dimples
REAR SEATS
HARDTOP



LAND CRUISER 70 SPECIFICATIONS

	SINGLE CAB CHASSIS	LX SINGLE CAB CHASSIS	DOUBLE CAB CHASSIS	LX DOUBLE CAB CHASSIS	HARDTOP	LX WAGON
MECHANICAL SPECIFICATIONS	The 4.5 litre Turbo-charged Diesel engine is a V8, 32 valve, Quad Cam with intercooler. Maximum power of 151kW is produced @ 3400rpm and maximum torque is 430Nm @ 1200~3200rpm. Common rail direct injection system					
	Diesel is required. Fuel tank capacity					
	90L	90L	130L	130L	90 + 90L	130L
	11.5L/304g	11.5L/304g	11.5L/304g	11.5L/304g	11.9L/313g	11.9L/313g
Fuel consumption/100km; CO ₂ emissions/km* combined ADR 81/02						
5-speed manual transmission						
Part-time 4WD with high-low ratio selection and Limited Slip rear Differential (LSD)						
BRAKES & SUSPENSION	Front suspension is Coil Spring rigid axle with low pressure gas-filled shock absorbers and stabiliser bar					
	Rear suspension is Leaf Spring rigid axle with low pressure shock absorbers (with stabiliser bar for Hardtop)					
	Steering is engine speed sensitive power-assisted recirculating ball					
	Minimum turning circle (on tyres)/turns lock to lock					
	14.4m/3.8	14.4m/3.8	14.4m/3.8	14.4m/3.8	13.6m/3.8	12.6m/3.8
	Power-assisted ventilated front disc brakes; ventilated rear disc brakes					
	Anti-lock Braking System (ABS)					
Wheels - 16" steel fitted with 7.50 R16 8 ply tyres. Full size steel spare wheel						
Wheels - 16" alloy fitted with 265/70 R16 steel belted radial ply tyres. Full size alloy spare wheel						
EXTERIOR FEATURES	Halogen headlights					
	Tinted laminated windscreen, green tinted side window glass					
	Washer linked front wipers with intermittent function (variable for LX models)					
	Intermittent rear window wiper					
	Air intake snorkel					
	Front and rear towing hooks					
	Side steps					
	Painted	Aluminium	Aluminium	Aluminium	Painted	Aluminium
	Black bumper, grille and exterior rear view mirrors; chrome exterior door handles					
	Chrome bumper, grille, exterior rear view mirrors and exterior door handles					
	Painted over fenders					
	Under-floor		Front		Rear door	
Spare wheel carrier						
Under-floor		Under-floor		Rear door		
Transfer case protector						
INTERIOR FEATURES & CONVENIENCE	Separate front seats with slide and recline functions, headrests with height adjustment					
	Rear transverse seat with tumble function, outer rear headrests with height adjustment; fabric seat covers					
	Parallel rear seats; vinyl seat covers					
	Interior floor covering					
	Vinyl	Carpet	Vinyl	Carpet	Vinyl	Carpet
	Tilt and telescopic steering column, 4-spoke urethane steering wheel; urethane gear and transfer levers					
	Air conditioning; front heater					
	Tachometer, twin trip meters; Multi-Information Display (MID) for LX models					
	Driver's seat belt warning light and buzzer					
	Assist grips					
	3	3	7	7	3	7
	Centre console open top console box with cupholders					
	Centre console console box with lid, cupholders and removeable tray					
Central door locking						
Power windows with driver's side auto down						
Under-floor		Front		Rear door		
Idle up switch						
AUDIO & CONTROLS	AM/FM radio and single disc in-dash MP3/WMA CD player. Auxiliary input jack and USB connection. Bluetooth handsfree phone capability and audio streaming, voice control for audio/phone, 3 line text display, security system					
	2 speakers	2 speakers	2 speakers	2 speakers	2 speakers	4 speakers
Radio antenna						
Manual		Power		Manual		
SAFETY AND SECURITY	Driver and passenger front airbags					
	2x3-point ELR front seat belts					
	2x3-point ELR outer rear seat belts and 1x2-point NR centre lap belt					
	8x2-point rear lap seat belts					
	Child proof rear door locks, child restraint system with 3 tether anchor points (Wagon only)					
	Side door impact bars					
	High stop light					
Engine immobiliser						
OPT	High Country Optional Package: includes front and rear diff locks. Note: standard rear LSD is deleted when this option is selected					

Because Toyota believes in going the extra mile we offer comprehensive support and a great range of products and services for our valued customers.

For more detail please visit: toyota.co.nz



*Fuel consumption and CO₂ emissions will vary depending on driving conditions/style, vehicle condition and options/accessories fitted. ADR 81/02 (combined). Every endeavour has been made to ensure text details and specifications contained in this publication were accurate as at 1 December 2014. Toyota New Zealand Limited reserves the right at any time to introduce any changes deemed necessary to improve the models shown or for any other reason. Paint and upholstery colours shown in this brochure may differ from actual colours due to variations in printing processes. Some models shown in this brochure may have optional accessories fitted. For further information contact your nearest Authorised Toyota Dealer. They will be glad to assist. [Production effective January 2014]

3,000
December 2014
SB333

