

 **TOYOTA** | *Believe*

COROLLA *HATCH*



COROLLA LEVIN ZR IN INFERNO WITH PANORAMA ROOF OPTION

History well made. In October 1966 Toyota introduced what has become the world's most successful car, ever. Toyota called it the Corolla, meaning "crown of a flower". It was small, affordable, well made and when it reached its first export market in Australia just eight months later it was very well received. Since then, over 39 million Corollas have sold worldwide.

Toyota has always worked hard to provide what people the world over want in a car - durability, safety, reliability, value for money and fuel economy. With each successive Corolla generation, those qualities have continued to evolve, along with Corolla's outstanding international reputation for getting all the important things right.



1966



1970



1974



1979



1984



1988



1992



1997



2001



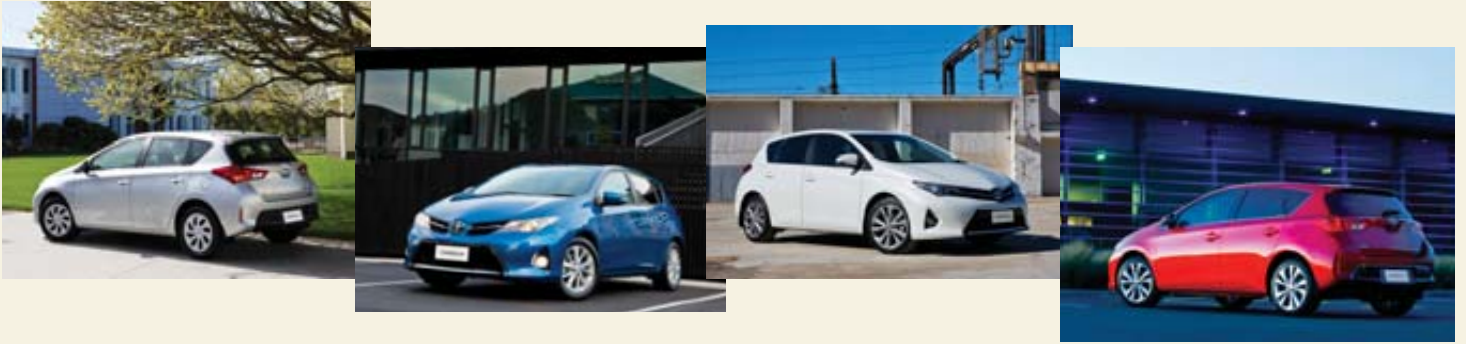
2007



The All New Corolla Hatch

LEVIN ZR IN INFERNO WITH
OPTIONAL PANORAMA ROOF

The car we call our own. Corolla is a hugely successful car in New Zealand. We've bought over 220,000 here so we Kiwis can rightly claim Corolla as our own. Since 1969, ten generations of New Zealand's favourite car have shared our lives and our special memories. We've chosen them to learn how to drive. We've relied on them to take us away on holiday. We've trusted them to keep the kids in the back safe. We've depended on them to minimise repair bills and maintain resale values. For so many good reasons, Corolla has long been a special member of the Kiwi family.



One special car - four very impressive specification levels



GX

COROLLA
Feels good inside



GLX



LEVIN SX

Far more to feel good about. In its 11th generation, the all new Corolla Hatch continues to exceed expectations. While we expect our favourite car to be durable, reliable, safe and fuel-efficient, one look will tell you those qualities weren't nearly enough for the designers and engineers of this exciting, all new European inspired range. Yes, the new Corolla Hatch is all the things you'd expect a Corolla to be, but you'll quickly discover there's far more to feel good about.



COROLLA
Feels good inside



COROLLA LEVIN SX IN CRYSTAL PEARL



Finished with the flair Kiwis will feel comfortable with. Soft-touch materials combined with contemporary leather and fabric designs take standards in the Corolla Hatch to new levels, inviting a driving experience that is a real pleasure (leather Levin ZR only).



Technology has moved on - so has Corolla Hatch. Travelling long distance is more entertaining for kids because they can plug their portable media or MP3 devices into the handy 12V accessory connector at the rear of the centre console box.



Audio convenience. All Corolla hatch models are also equipped with Bluetooth hands-free phone compatibility and audio streaming, voice recognition, auxiliary jack and USB input as well as a single CD player and 6 speakers.



Every design detail has been carefully considered. Special aero-stabilising fins are part of the beautifully resolved, aerodynamic design thinking that reduces wind noise. Even the wipers have been sculpted to manage wind flow.



Electrically adjusted, body coloured mirrors also have side indicator lights. To remove fog from mirrors on cold mornings, the Levin ZR also features side mirror heaters with an automatic retract function when doors are locked.

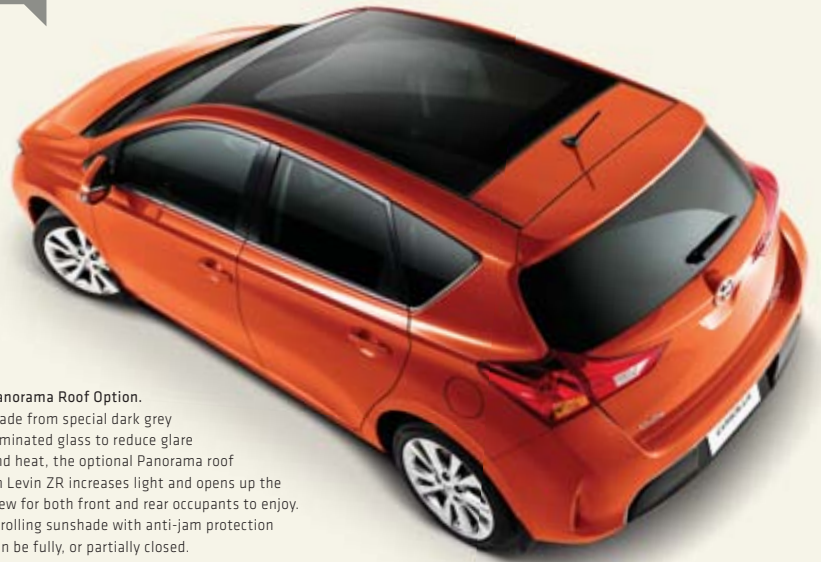


Improved cabin space also comes with increased luggage capacity and wider rear access. When not required, the parcel tray can slide behind the rear seats. Extra storage can be found in the storage wells beneath the rear floor.

LEVIN ZR

ALL COROLLA LEVIN ZR IN INFERNO

Levin ZR is Corolla's benchmark for luxury. From leather to lights, never before has a Corolla Hatch had such an impressive specifications. For anyone familiar with Corolla, new Levin ZR is a revelation.



Panorama Roof Option.
Made from special dark grey laminated glass to reduce glare and heat, the optional Panorama roof on Levin ZR increases light and opens up the view for both front and rear occupants to enjoy. A rolling sunshade with anti-jam protection can be fully, or partially closed.



As you touch the handle, the Levin ZR's smart key system unlocks and moves the side mirrors back into position. Once you're settled in behind the wheel, simply depress the brake pedal and push the engine start button. On leaving the Levin ZR, simply touch the sensor on either of the front door handles and the car will lock automatically, arm the immobiliser and alarm system, and move the side mirrors out of harm's way.



High Intensity Discharge (HID) headlights.
The Levin ZR's headlights with their bright white light offer better night vision and they're clever too. When turning into a corner the adaptive front-lighting system (AFS) will swivel in response to your steering. Once activated, the Automatic High Beam system (AHB) will automatically dip from their usual high beam setting for oncoming traffic. The advanced lighting system is completed with LED clearance lights and pop up headlight cleaners.



The sport seating in Levin ZR supports you in your ideal driving position and snugly surrounds you in the luxury of perforated leather finished with white accent stitching. For added comfort, front seats are heated and electronic lumbar support is provided for the driver.



The class leading look and feel of stitched leather is continued throughout the superbly styled Levin ZR interior and features the sleek, soft touch leather front instrument panel which is complemented by Corolla's chrome accents.



Dual zone automatic climate control allows both driver and front passenger to select their preferred temperature and manually adjust the air direction from the multiple air registers.

LEVIN SX

ALL COROLLA LEVIN SX IN CRYSTAL PEARL

The introduction of Levin badging for Corolla in New Zealand brings with it a sportier look along with sport seating and higher specification levels.

Your joy of driving in Levin models will be enhanced with the responsive paddle shifting through 7-sequential gear steps.



Performance is measured on high grade 2-ring gauges grouped with a large multi-function information display.



Paddle shift is a great way to get more involved with Levin SX performance. Fun is just around the corner when you move the Levin SX to manual mode and change your way up and down the gears with rapid response through all 7-sequential gear steps, Levin SX is very quick to please.



The Levin SX also takes full advantage of the improved driving position with more supportive sports seating. Stylish black and red patterned seating fabric is finished with red stitching which is carried through to the door panels.



All models have 60/40 split folding rear seats that allow optimisation of space for passengers and luggage.



Helping to complete the cohesive sports interior of the Levin SX, a carbon fibre look strip is incorporated into the instrument panel combining beautifully with the dark finish of the soft touch materials.

GX

ALL COROLLA GX IN SILVER PEARL

The selection of soft touch finishes and fabrics are impressively inviting in the GX Hatch. GX drivers have the choice of Continuously Variable Transmission (CVT) with 7-speed sport sequential manual mode or 6-speed manual transmission. Both deliver improved fuel consumption and driving performance.



Extensive use of Euro inspired soft touch materials, and brushed matte black metallic accents complement the durable, designer black and white seating fabric, which features distinctive white stitching.

GLX

ALL COROLLA GLX IN TIDAL BLUE

Added touches of flair, a higher specification level, more technology and distinctive finishes make GLX a really attractive option for those drivers seeking more.



The GLX's stitched leather steering wheels also complemented by a leather gear lever. The multi-function 6.1" TFT touchscreen display adds more technology with an SD card input for personal pictures, phone book access capability and email/SMS support capability.

GLX makes parking a breeze with the help of a reversing camera display on the 6.1" touch screen which also shows static backing guide lines.

Rear privacy glass adds to the sleek look of the GLX while providing protection from the heat of direct sunlight.

Superior performance and improved safety.

New Corolla Hatch makes its intentions immediately known. Each of the four models in the range has a dynamic European inspired look that is longer, lower and poised to perform.

The refined suspension, lower centre of gravity and a Continuously Variable Transmission (CVT), all contribute to better handling, making the drive a real pleasure.

The addition of the Levin ZR and Levin SX with their upgraded sport seating and paddle shift technology will also be exciting news for Corolla drivers wanting an enhanced driving experience and more responsiveness.

More safety features than ever before. Corolla Hatch has achieved 5 stars in ANCAP testing with standard safety features like Vehicle Stability Control (VSC) and Traction Control (TRC). Added protection also includes a full airbag package with drivers' knee airbag, as well as an emergency brake signal that blinks the hazard lights to alert following drivers in certain braking situations.

With families in mind, a rear seatbelt warning light on the dash alerts the driver when rear passengers are not properly secured.

Pedestrian safety collision measures have also been considered with special impact materials designed into the vehicle. Even the windscreen washers are recessed under the specially engineered bonnet.



Beneath the surface of Corolla hatch is a meticulously designed frame built to absorb collision impacts. On the outside, each panel flows seamlessly into the next.



Increased power and fuel efficiency, Corolla Hatch's lively 1.8 litre engine now has a Formula-1 inspired Acoustic Control Induction system (ACIS) variable intake system to optimise power and torque while improving fuel efficiency.



Seamless performance - all models have a wonderfully smooth, Continuously Variable Transmission (CVT). Both Levin models add a 7-speed sport sequential manual mode that enables quick manual gear changes. A six-speed manual is also available with the Corolla GX.



Front seat occupants are quickly reminded if rear passengers are not correctly belted up.

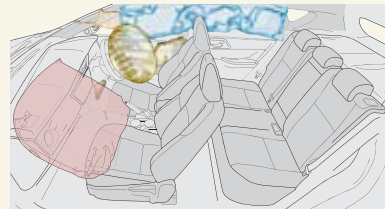


Pushing the Sport button in CVT models alters engine and transmission characteristics for a sportier response.

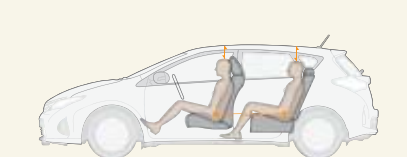


ANCAP
Safety ★★★★★

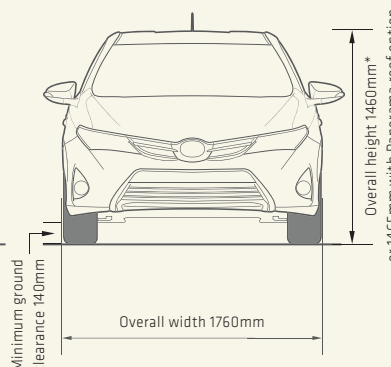
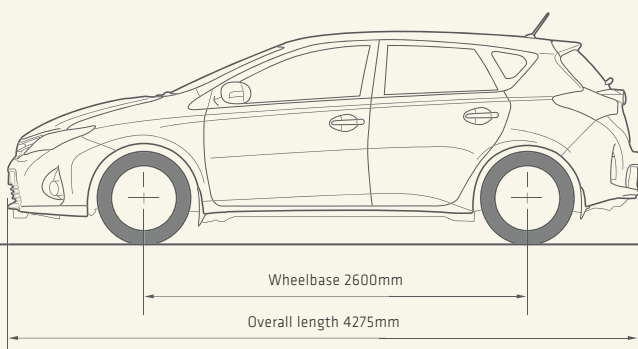
Corolla Hatch has achieved 5 stars in the ANCAP safety test.



Corolla hatch occupants are well protected with driver and passenger front, front side, front/rear curtain shield and driver's knee airbags.



Positioned for performance and comfort. Corolla's lower seating position and new seating designs allow easy entry while providing increased headroom and a better driving position. The lower centre of gravity also helps to significantly improve handling.



Corolla Hatch dimensions:

Gross vehicle weight	1805kg
Kerb weight (min/max) GX:	1250-1255kg
Kerb weight (min/max) GLX:	1270-1275kg
Kerb weight (min/max) Levin SX/ZR:	1275-1310kg
Luggage capacity:	360L
Seating capacity:	5

Make Corolla your own. Only Toyota Genuine Accessories are designed and manufactured to the same high standard as original parts. They are engineered using manufacturer data to ensure that vehicle integrity is not compromised. This means the functionality of important precision systems such as airbags will not be impaired by their installation.



Corolla GLX Hatch shown accessorised with:
17"x7" 'Pitlane II' Alloy Wheels;
Front Park Assist - 4 Sensor; Headlight Protectors - Acrylic;
Weathershields, Slim-line - Acrylic.



Audio Visual Navigation (AVN) Unit. Confidently navigate with this 6.1" TFT full colour touchscreen AVN unit. The AVN has all the features of the Display Audio with GPS mapping in 2D/3D display modes and voice guidance to assist in accurate navigation when driving.



Bonnet Protector and Headlight Protectors - Acrylic.
Prevent damage to the bonnet and headlights with these custom fit protectors. They are resistant to cracking and UV discolouration and are easy to keep clean. Fixed with stainless steel hardware so they stay securely attached. Sold separately.



Front Seat Covers- SRS Airbag Compatible (GX and GLX only).
Protect the front seats from daily wear and tear with these black fabric seat covers. Fully SRS side airbag compatible and patterned to complement the Corolla GX & GLX interior. Rear covers available separately.



Weathershields, Slim-line-Acrylic. Allow fresh ventilation into the cabin while keeping the elements out. Supplied as a slim line front and rear set. Constructed from a lightly tinted acrylic to reduce glare and are resistant to cracking and UV discolouration.



Carpet Floor Mats. Custom tailored for a superb fit, these high quality carpet mats will protect the floor of your Corolla from wear and tear. The driver's floor mat has two clip retainers to ensure it remains securely in place.



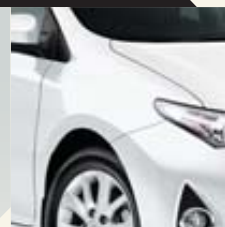
Front Park Assist. This four sensor Front Park Assist system provides audible alerts to help assist with front clearance when parking. The ultrasonic sensors are colour matched to the vehicle.



Cargo Liner - TPE. Protect the cargo area of your Corolla with this all-weather cargo liner. Custom moulded to ensure a secure fit and made from a highly durable and flexible material. Remove and hose off for easy cleaning.

Corolla Hatch exterior colours

Glacier White
040



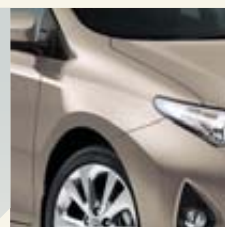
Crystal Pearl
CRYSTAL SHINE
070
N/A GX



Silver Pearl
METALLIC
1F7



Avant-Garde Bronze
METALLIC
4V8



Inferno
METALLIC
4R8
LEVIN SX &
LEVIN ZR ONLY



Wildfire
MICA METALLIC
3R3

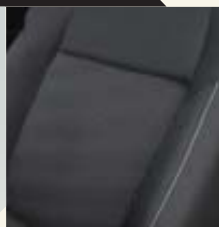


Tidal Blue
METALLIC
8T7



Corolla Hatch interior trim

GX & GLX
BLACK FABRIC
WITH WHITE
ACCENTS



Levin SX
BLACK FABRIC
WITH RED
ACCENTS



Levin ZR
BLACK
LEATHER



Ink
MICA
209



COROLLA HATCH SPECIFICATIONS

	GX		GLX	LEVIN SX	LEVIN ZR
	Manual	CVT	CVT	CVT	CVT
MECHANICAL SPECIFICATIONS	Engine description				
	1.8 Litre, 4 cylinder, in-line, 16 valve Double Over Head Cam (DOHC) with Dual Variable Valve Timing-intelligent (VVT-i), Electronic Fuel Injection (EFI) and Acoustic Control Induction System (ACIS)				
	Maximum power				
	103kW at 6400rpm				
	Maximum torque				
	173Nm at 4000rpm				
	Fuel type				
91 octane or higher is recommended					
Drive type					
Front wheel drive					
Fuel economy - combined ECE101/01					
7.1 L/100km 6.6 L/100km 6.6 L/100km 6.6 L/100km 6.6 L/100km					
CO ₂ emissions - combined ECE101/01					
166g/km 152g/km 152g/km 152g/km 152g/km					
Transmission - 6-speed manual					
•					
Transmission - Continuously Variable Transmission (CVT) with 7-speed sport sequential manual mode, sport mode (with button), uphill and downhill shift control and lock-up control					
• • • Paddle shift Paddle shift					
BRAKES & SUSPENSION	Brakes - Front - Power-assisted ventilated disc				
	• • • • •				
	Brakes - Rear - Power-assisted solid disc				
	• • • • •				
	Anti-lock Braking System (ABS), Brake Assist (BA), Electronic Brake-force Distribution (EBD), Vehicle Stability Control (VSC) and Traction Control (TRC) with on/off switch. Hill-start Assist Control (HAC) in CVT models.				
• • • • •					
Suspension - Front - MacPherson strut and stabiliser bar					
• • • • •					
Suspension - Rear - Torsion Beam					
• • • • •					
EXTERIOR FEATURES	Wheels				
	16" steel 16" steel 16" alloy 17" alloy 17" alloy				
	Spare wheel - Temporary				
	• • • • •				
	Headlights - Halogen with manual levelling and light control system (auto off)				
	• • • • •				
	Headlights - High Intensity Discharge (HID) lights with black tint, automatic levelling and cleaners, LED clearance lights, Adaptive Front-lighting System (AFS) with off switch, Automatic High Beam system (AHB) and light control system (auto on/off)				
	• • • • •				
	Fog lights - Front				
	• • • • •				
	Body coloured front bumper, outside door handles and rear bumper (with black lower bumper), black front and rear mud guards. Outside mirrors (with black lower section) with side indicator lights and electric adjustment.				
	• • • • •				
	Front grilles - Body coloured upper grille. Matte black trapezoid lower grille with chrome accent				
• • • • •					
Front grilles - Chrome horizontal accent upper grille. Gloss black trapezoid lower grille with chrome accent					
• • • • •					
Front grilles - Chrome horizontal accent upper grille. Gloss black trapezoid lower grille with chrome accent, surround and three horizontal lines					
• • • • •					
Aero stabilising fins on rear combination lamps and outer mirrors. Front and rear air spats and integrated rear spoiler					
• • • • •					
Windscreen wipers - Variable intermittent and mist functions					
• • • • •					
INTERIOR FEATURES & CONVENIENCE	Interior trims - Black/white fabric seat material with white stitching. Silver door grip and chrome plated door handles.				
	• • • • •				
	Interior trims - Black/red fabric seat material with red stitching. Sports style door grip and chrome plated door handles.				
	• • • • •				
	Interior trims - Genuine black leather seats with synthetic side bolsters. Silver door grip and chrome plated door handles.				
	• • • • •				
	Instrument panel - Soft padded upper section with leather-like grain texture. Silver metal style accents on audio surrounds, air registers and gear lever.				
	Brushed metal appearance Brushed metal appearance Brushed metal appearance Black carbon style appearance Black leather appearance				
	Drivers seat - With slide, recline and vertical height adjustments. Power lumbar support in Levin ZR.				
	• • • • •				
	Passenger seat - With slide and recline adjustments				
	• • • • •				
	Rear seat - 60/40 split folding, left and right release levers and centre armrest with cup holders				
• • • • •					
Gear lever					
Urethane Urethane Leather Leather + paddles Leather + paddles					
Steering wheel - 3-spoke with cruise control, audio, phone and display switches. Tilt and telescopic adjustment					
Urethane Urethane Leather Leather Leather					
Air conditioning - Manual with dial type controls and pollen filter					
• • • • •					
Air conditioning - Automatic dual zone climate control with push button controls and pollen filter					
• • • • •					
Cruise control					
• • • • •					
Illuminated entry system					
• • • • •					
Inside rear view mirror - Day/night anti-glare function					
• • • • •					
Storage - Centre console box, door pockets with bottle holders, glove box with lamp, front storage tray and overhead console storage area; driver's side small item area. Luggage area with removable parcel tray that slots behind rear seats					
• • • • •					
INSTRUMENTS & CONTROLS	Meters - Three ring style with speedometer, tachometer, fuel gauge and LCD Multi-Information Display (MID)				
	• • • • •				
	Meters - Two ring style with speedometer, tachometer, fuel gauge, large Multi-Information Display (MID) with meter illumination control sensor				
	• • • • •				
	Multi-Information Display (MID) with average fuel consumption, cruising range, Eco driving indicator zone display (CVT only) and outside temperature display				
• • • • •					
Multi-Information Display (MID) with current and average fuel consumption, cruising range, average vehicle speed, driving time, Eco driving indicator zone display (CVT only), outside temperature and messages display					
• • • • •					
AUDIO	Audio - Radio with single disc CD player, AUX port, USB connection, Bluetooth handsfree phone capability and audio streaming, voice recognition. Six speakers				
	• • • • •				
	Audio - 6.1" touchscreen display audio with radio, single disc CD player, AUX port, USB connection, SD card input for photos, Bluetooth handsfree phone capability and audio streaming, phone book, SMS and email capability, voice recognition. Six speakers				
• • • • •					
SAFETY & SECURITY	Airbag system - Driver and passenger front, front side, front/rear curtain shield and driver's knee				
	• • • • •				
	Engine immobiliser				
	• • • • •				
	Child seat fixing points - 2 x ISOFIX, 3 x tether anchor bracket. Child proof rear door locks				
	• • • • •				
	Seat belts - Front - 3-point, ELR, pre-tensioners and force limiters. Height adjustable seat belt anchors				
	• • • • •				
Seat belts - Rear - 3 x 3-point ELR					
• • • • •					
Wireless central door locking					
• • • • •					
Smart key system with front door and luggage door touch sensors					
• • • • •					
Reversing camera with static guide lines (display in audio)					
• • • • •					
OPT	PANORAMA ROOF OPTION - Panorama roof with dark grey laminated roof glass. Roof sun shade is rolling style, electric with jam protection functions				•

Because Toyota believes in going the extra mile we offer comprehensive support and a great range of products and services for our valued customers. For more detail please visit: www.toyota.co.nz/extracare

Follow us on:



*whichever occurs first under normal operating conditions. *Fuel consumption and CO₂ emissions will vary depending on driving conditions/style, vehicle condition and options/accessories fitted. [ECE101/01].

Every endeavour has been made to ensure text details and specifications contained in this publication were accurate as at 7 December 2012. Toyota New Zealand Limited reserves the right at any time to introduce any changes deemed necessary to improve the models shown or for any other reason. Paint and upholstery colours shown in this brochure may differ from actual colours due to variations in printing processes. Some models shown in this brochure may have optional accessories fitted. For further information contact your nearest Authorised Toyota Dealer. They will be glad to assist. [Production effective August 2012]

4,500

December 2012

SB304

TOYOTA | Believe

0800 TOYOTA • www.toyota.co.nz